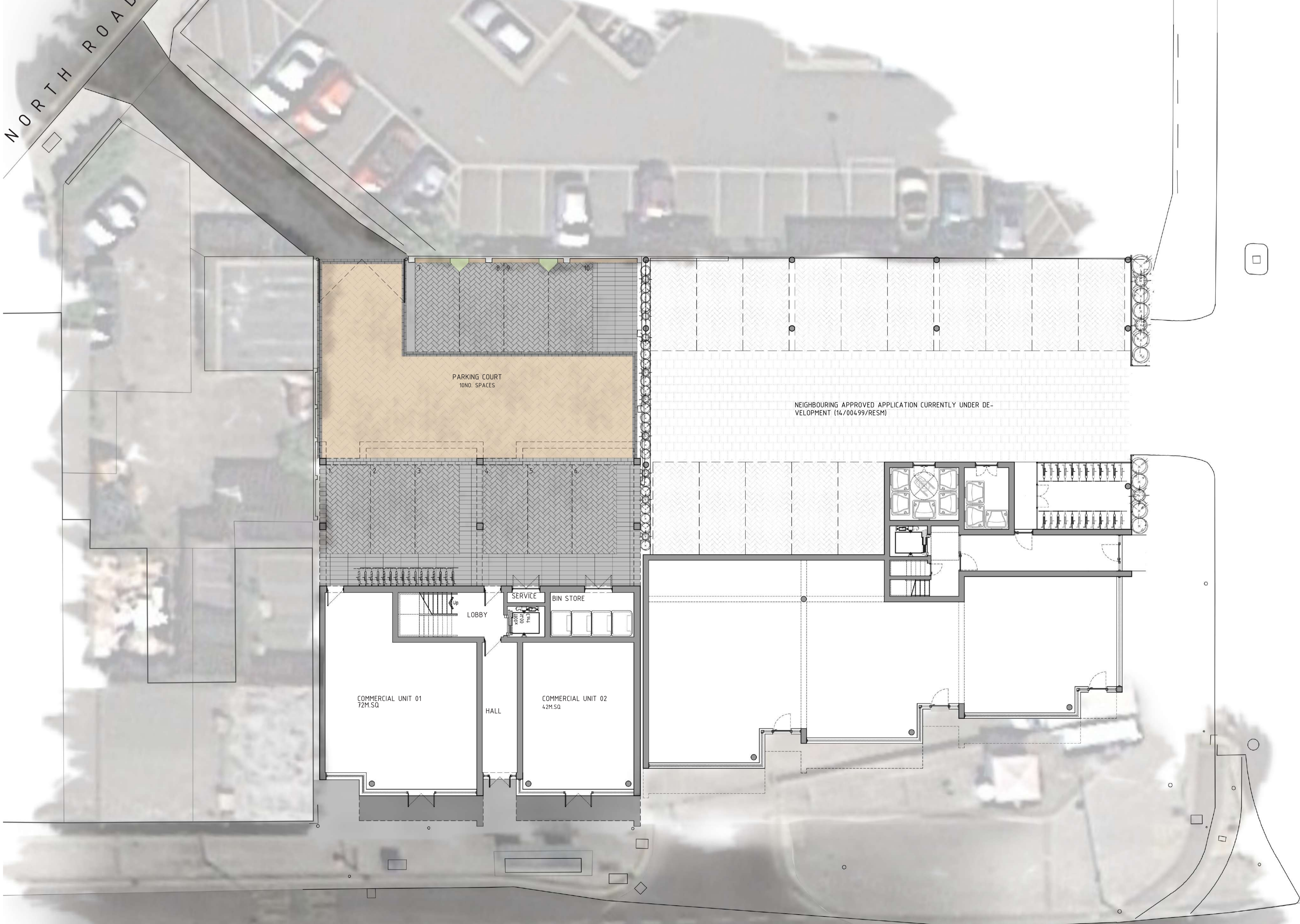


# 177 LONDON ROAD, SOUTHEND-ON-SEA

MIXED-USE SCHEME: 16NO. RESIDENTIAL APARTMENTS + 2NO. COMMERCIAL UNITS.

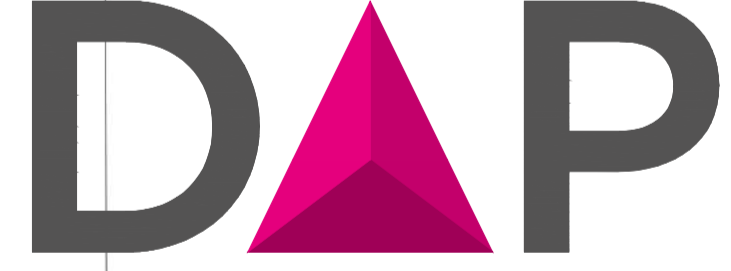


**GENERAL NOTES**  
 The copyright in all designs, drawings, schedules, specifications and any other documentation prepared by DAP Architecture Ltd. in relation to this project shall remain the property of DAP Architecture Ltd. and must not be reissued, loaned or copied without prior written consent.  
 Do not scale from this drawing, use figured dimensions only.  
 Prefer larger scale drawings.  
 All dimensions are in millimeters (mm) unless otherwise noted.  
 Check all relevant dimensions, lines and levels on site before proceeding with the work.  
 This drawing is to be read in conjunction with all Architect's drawings, schedules and specifications, and all relevant consultants' and/or specialists' information relating to the project. Refer all discrepancies to DAP Architecture Ltd.

B R I G H T E N R O A D

L O N D O N R O A D

REV.	DESCRIPTION	DATE
------	-------------	------



ARCHITECTURE LTD

PROJECT  
RESIDENTIAL DEVELOPMENT

DRAWING  
AS PROPOSED  
SITE + GROUND FLOOR PLAN

CLIENT  
GREEN-TURTLE CAY LTD

ADDRESS  
177 LONDON RD  
SOUTHEND-ON-SEA  
SS1 1PW

DATE	SCALE	DRAWN BY	CHECKED BY
15.12.16	1:100 @ A1	LC	DAP

PROJECT No.	DWG No.	REVISION
703.200.01		

ISSUE STATUS  
PLANNING

a. 3 + 5 Hospital Approach  
 The Millers  
 Chelmsford  
 ESSEX, CM1 7FA  
 e. studio@daparchitecture.co.uk  
 t. (0844) 854 9007  
 w. www.daparchitecture.co.uk

CHELMSFORD LONDON BIRMINGHAM